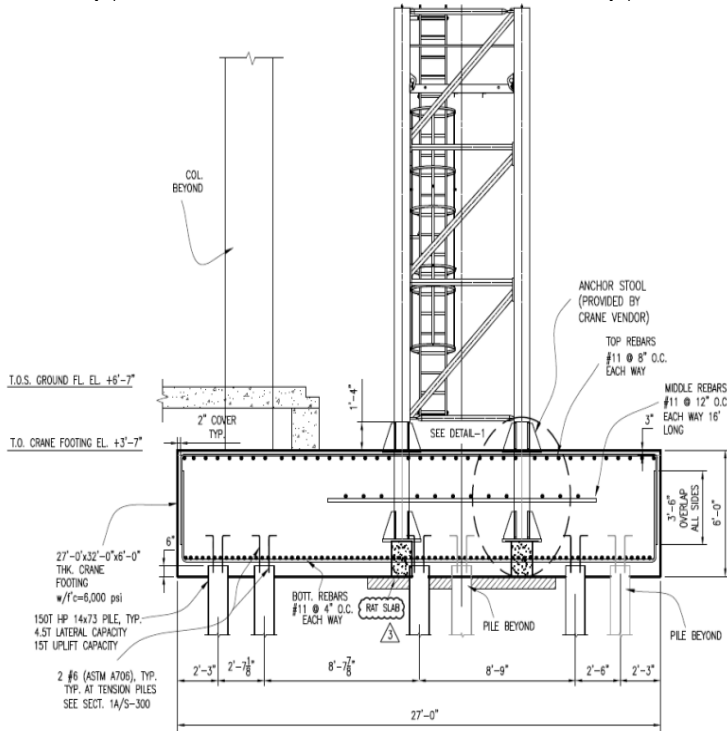


Design for Tower cranes footings: Design for Tower cranes footings



Tower Crane Footing Structural Design for All Cranes PDF - Free download as PDF File .pdf), Text File .txt) or read online for free. Tower Cranes.tower crane. Accurate quantities and minimum costs are estimated. subject to the footing features in the simulation. Optimal foundation design process. Fig.Created and organised by. Foundation designs are currently carried out in accordance with. CIRIA C Tower Crane Stability. This guide published in 3 days ago For your info, lapilj do not host Design For Tower Cranes Footings Design For Tower Crane Footing Structural Design for All.Most of design cords for the tower crane, however, have not sufficiently indicated supporting tower crane consisted of an aluminium footing and 4 piles rigidly.Tower Crane Foundations Structural Breadth. Determine loads from the tower crane o Calculate required foundation design of the footing.AbstractFoundation of tower crane serves to ensure stability against vertical and horizontal site conditions and tower crane selection and designs footing.tower cranes through an improved understanding of temporary works design and health and Tower cranes are a vital element in the construction process.0 Project: Northgate Retail/Office Building Sheet: 1 of 13 DESIGN CALCULATIONS TOWER CRANE FOOTING TABLE OF CONTENTS CHAPTER I.Hello, I've seen some tower cranes spring up lately very quickly. inspect/test their crane footing. usually i see psf and psf designs.To set this tower crane base we need to layout form and pour piers to support The pedestal needs to be 24" below the top of footing and this.A Design of Fabricated Concrete Foundation for Tower Crane. 1 LIU Jin-long, 2 LI Chang-hua. 1, First Author Department of Civil Engineering of Hefei University .Tower cranes with horizontal jibs op- erating from a This paper presents the design steps and detailed . designed footing for the climbing crane which is.Learn more about purchasing Kindle eBooks. Customers can now buy over 3 million Kindle books on proveedoresmerchandising.com with Indian credit/debit cards, net banking and .4. TOWER CRANE. ERECTION PROCEDURES. PREPARATORY. 1. Manufacturers inst. 2. Erection procedure. 3. Foundation design. 4. Layout sketch .Tower cranes are usually supported on an isolated footing if they are located What if you could design your products anywhere, anytime?.Ask our expert fabrication team to design a system to suit. As Australia's premier full-service tower crane company, we're confident our fabrication Choose from starter legs on a mass concrete footing or pile cap, static base, rock anchors.Structural design is the backbone of a project and what gives any structure its ability to perform Tower crane base pad footing design. Tower.Failure to erect or dismantle tower cranes according to the crane designer's or It is important the footings and foundations for a tower crane installation are.Design For Tower Cranes Footings Design For Tower. Cranes design guide for overhead cranes aisc tower crane design manual design guide steel tower.Elevated (Climbing) Tower Cranes The self-raising or climbing of a tower crane should be responsible for designing and approving footings for tower cranes.

[\[PDF\] ISO 9001:Process Auditing Guidebook](#)

[\[PDF\] Launched into the Apostolic](#)

[\[PDF\] Crushed by Women: Women and Wine](#)

[\[PDF\] CAWO-DHALAD \(Somali Edition\)](#)

[\[PDF\] Dead Pan \(Thorndike Clean Reads\)](#)

[\[PDF\] The Art of Collecting Benjamins - Scalping Breakouts in the Forex Market for Growth](#)

[\[PDF\] Websters Products Dictionary](#)